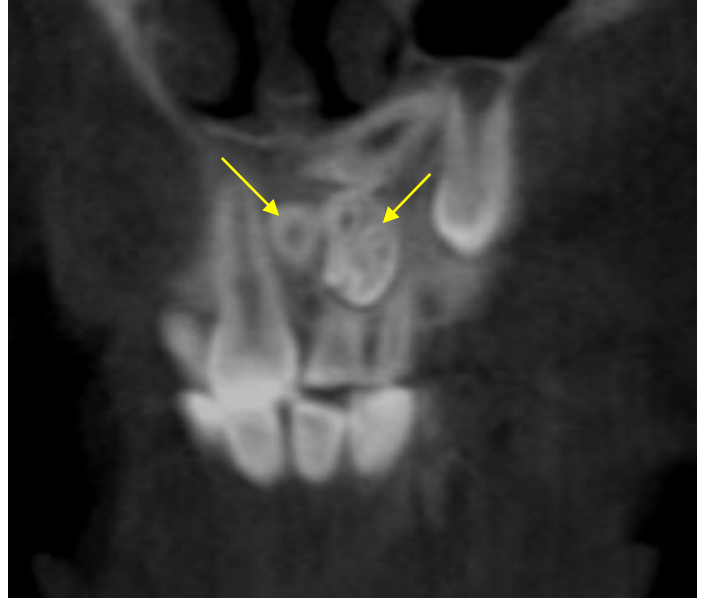




Tooth #11



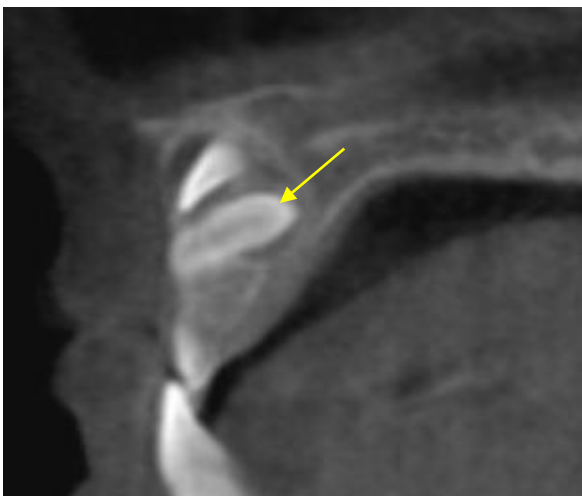
Odontoma



Odontoma

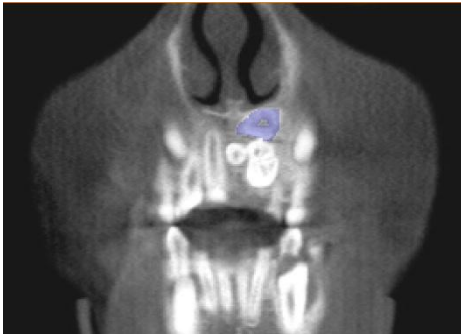


Odontoma

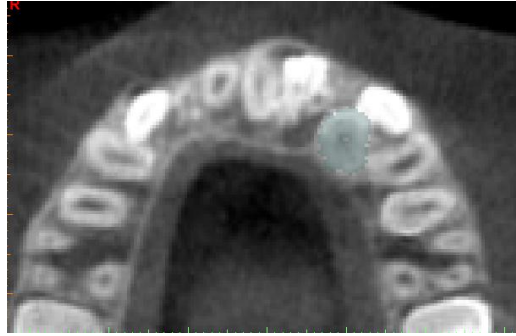


Right supernumerary tooth

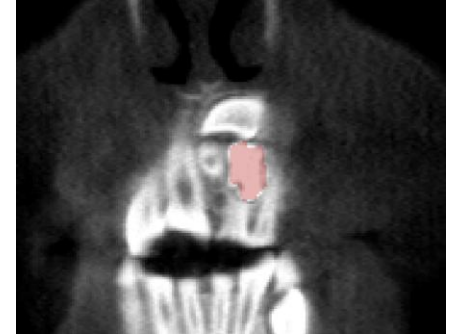
3D Segmentation and Clean Up by 3D Diagnostix



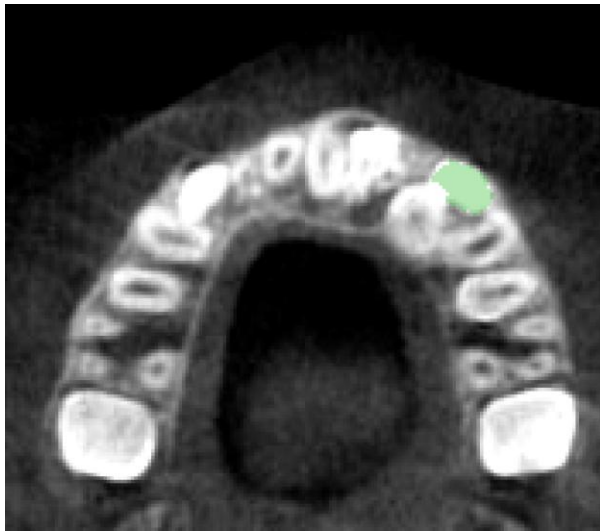
Impacted #9



Impacted #10



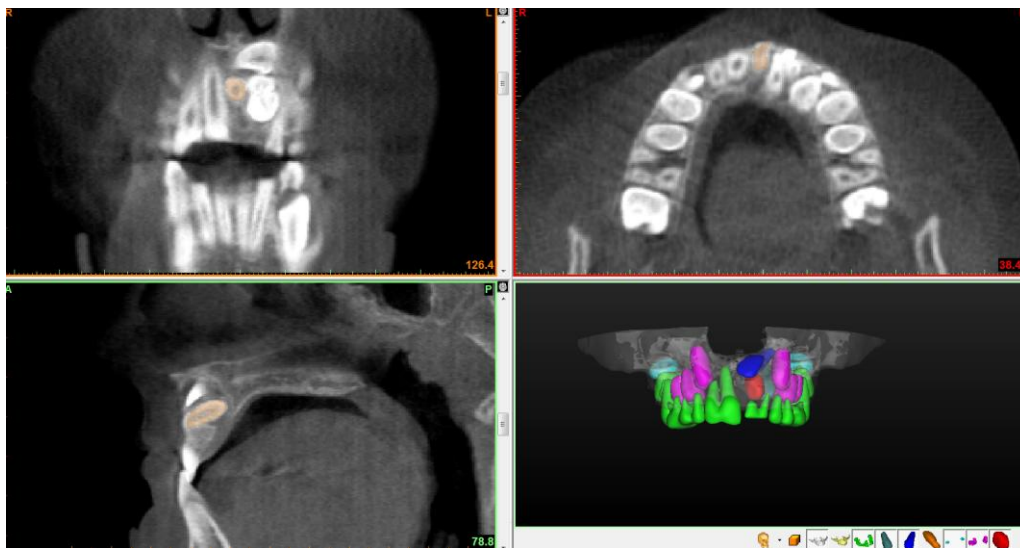
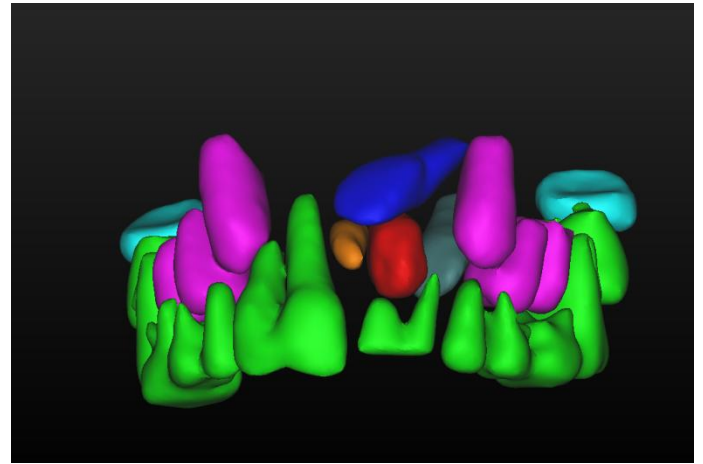
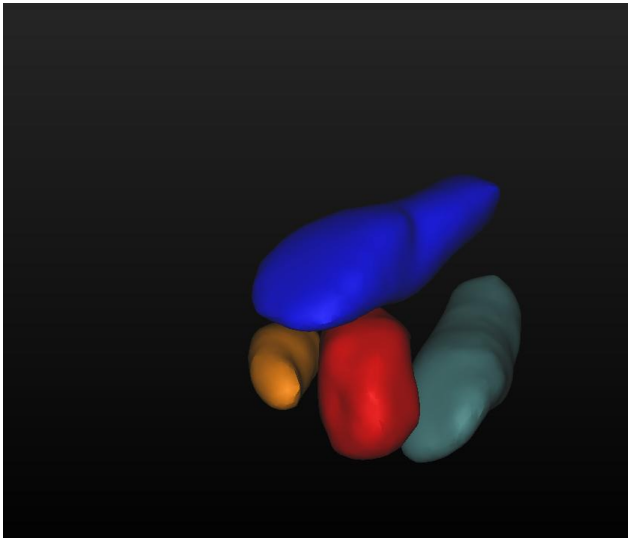
Impacted #11



Odontoma



Right supernumerary toothH



About Dr. Noujeim

Dr. Marcel Noujeim is an Associate Professor, Division of Oral and Maxillofacial Radiology (OMFR), Department of Comprehensive Dentistry. Dr. Noujeim received his dental degree and two specialty degrees in oral biology and maxillofacial radiology from the Lebanese University, School of Dentistry in Beirut. He began teaching dental radiology in September 1990 at the Lebanese University, School of Dentistry in Beirut and was appointed as division head from 1999 until 2002. In 2003, he moved to the United States where he finished a Master of Science (MS) degree in Dental Diagnostic Science (OMFR) from UTHSCSA Dental School in 2006.

He has given many presentations and continuing education courses at national and international meetings and has authored numerous articles and abstracts in national and international journals. Dr. Noujeim was the recipient of two awards given by the American Academy of Oral and Maxillofacial Radiology and the International Association of Dentomaxillofacial Radiology in 2005 recognizing him as being one of the best promising junior faculty/dental radiology educators. He has a US patent for an invention permitting the repositioning of CT data for comparison of minor bone changes.